



MERKAT

— CONSTRUCTION —

www.merkatconstruction.com

ALUMINIUM FORMWORK



Adjustable Steel Prop

Designed to support formwork walls and slab



Mould Oil

A releasing agent that provides easy removal of formwork



Reusable Flat Tie

Designed to hold aluminum panels together with steel pin and wedges. Can be used for multiple cycles of casting



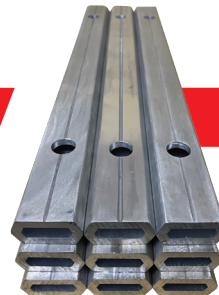
Embedded Flat Tie

Also known as single use or break tie length depends on wall thickness



PVC Sleeve

Reusable PVC sleeves are used to protect reusable flat ties during casting or concreting



Joint Bar (Link Bar)

To connect the prop head with beams (End Beams or Middle Beams)



Waler Bracket

Commonly used with steel hollow sections to strengthen or brace the aluminum formwork for concreting or casting



Bolt, Nut and Washer Set

To firmly connect panels during installation and for concreting process



PP Corrugated Sheets

Standard Size: 1300mm x 2440mm
Thickness: 2mm – 10mm



LDPE Tubing

Used with reusable flat ties and pp corrugated sheets to allow easy removal of flat ties.

PVC Sleeves are another alternative to be used with reusable flat ties.



Steel Pin & Steel Wedge Set

This set secures the flat ties together with the aluminum formwork



Wing Nut D 15

Place under general construction fittings



L Bar

Used to remove steel pin and wedges from formwork



Panel Puller (Y Bar)

Designed to remove aluminum panels

PLASTIC SPACERS



Plastic Wheel Spacer

Extensively used for precast or on-site concrete application. Designed to fit bar sizes from 6 – 25mm



Plastic Heavy Duty Bar Chair

Installed as rebar support for slab concrete casting. Designed to withstand high breaking load



Plastic Wall Spacer

Used to prevent steel from coming into contact with vertical formwork during concrete pouring



Plastic Shim Plate

Used to align or fill gaps between slabs or bricks to achieve optimum levelling



Plastic Chair Spacer

Specially designed to accommodate wire mesh bar sizes from 6mm – 9mm with its strong and improved leg support

FORMTIE FORMWORK SYSTEM

B & D Inner Unit

Length:
100mm onwards
Diameter:
B=9mm, D=12mm

Rubber Ring

Diameter:
9mm & 12mm

Washers

Width: 50mm
Length: 100mm & 150mm

B & D Cone

Length:
B=25mm, d=40mm
Diameter:
B=25/30mm, D=30/40mm

Hex Nut

1/2"

B & D Form Tie

B Formtie Length: 250mm
Yellow Zine Galvanized
D Formtie Length
200mm to 400mm
Diameter: 12mm

GENERAL CONSTRUCTION FITTINGS



Steel Tie Rod

Dywidag thread option available
Max diameter 17mm
Min diameter 15mm



Steel Bar Chair

An alternative to plastic spacer, steel bar chairs are made from steel. They provide support for rebars and BRC mesh



Hook & Eye Turnbuckle

Widely used with wire rope or chain. Simply twist to adjust tension or length of ropes, cables and other tensioning systems

Material and other types available:
Eye & Eye, Hook & Hook, Jaw & Jaw etc.



Hexagonal Nut

Length available:
30mm, 50mm, 70mm



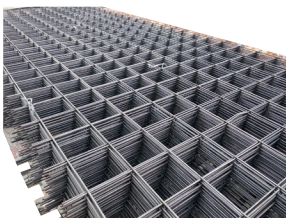
Tie Nut

Available sizes: 80mm, 100mm
Coating: Plain or Hot Dip Galvanized



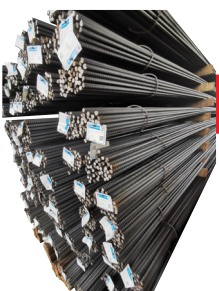
U Clip

A galvanized carbon steel rod, specially designed for metal formwork and reusable



BRC Mesh

The main use for BRC mesh are reinforcement of slab and retaining wall, precast products and building components etc. Square mesh or rectangular mesh available



Rebar MS146:2014

Rebar (short for reinforcing bar), also known as reinforcing steel are used to strengthen and aid the concrete under tension



U Head

Designed to be used with props or system scaffolding. Popularly used to hold timber beams securely in place. Refurbishment services available

MERKAT CONSTRUCTION GLOBAL NETWORK



LATIN AMERICA

Brazil

MIDDLE EAST

Dubai

SOUTHERN ASIA

Maldives
Sri Lanka
Bangladesh

SOUTHEAST ASIA

Malaysia
Singapore
Thailand

MERKAT CONSTRUCTION ACCESSORIES PLT (LLP0009157-LGN)

A-1-7, JLN PJU 1a/3j, Taipan Damansara 1, Ara Damansara,
47301, Petaling Jaya, Selangor.

O : +6 03 7831 1710

M : +6 017 2929 383 | +6 012 207 5018 | +6 018 3155 393

✉ info@merkatconstruction.com